



TeMa
Technologies
and Materials

South Africa



ROCK-FILLED GABION & MATTRESS RIVER REVETMENT

NATURE OF INTERVENTION

Revetment and erosion control is paramount for rivers or waterways in built up areas.

Historically, these considerations have required large amounts of space and vegetative requirements. With the demand and limitations on space, especially in rejuvenated urban areas, new methods are constantly required that allow for minimal footprint and economical cost while at the same time achieving maximum effectiveness and control of the water volumes with no potential damage risk.

Location:

Pretoria, Gauteng, South Africa

Products:

- *TeMa-GABION Galv/PVC*
- *TeMa-MATTRESS Galv/PVC*
- *TemaTEX NW4 nonwoven geotextile;*

Quantity:

Various sized units supplied

Application:

River Revetment, Erosion Control

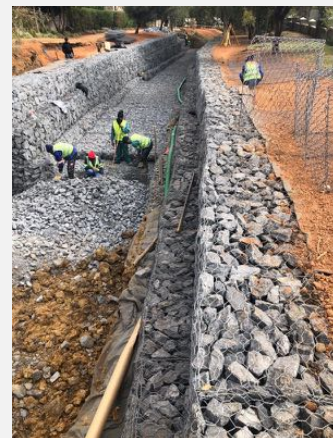
Date:

August, 2019

SOLUTION

A range of different sized units of the galvanized/ PVC coated **TeMa-GABION** and **TeMa-MATTRESS** were used to create an attractive river channel that was both aesthetically pleasant and functional. Where necessary abutments for several pedestrian bridges were incorporated into the design. All units were lined with **TemaTEX NW4** – Polyester. Continuous filament nonwoven geotextile to prevent wash out of the backfill material.

The use of the TeMa Geo products, provided significant benefits over other conventional natural materials to the project in terms of cost, ease of installation and a reduction in construction time.



TeMa South Africa (Pty) Ltd

241 Joseph Road, Tunney Industrial, Germiston 1429
Tel: +27 (0) 72 873 0101
Email: temaSA@temacorporation.com

Web site: www.temaSouthAfrica.com

TeMa Technologies and Materials srl

via dell'Industria 21 – 31029, Vittorio Veneto (TV), ITALY
Tel: +39 0438 5031
Email: info@temacorporation.com

Web site: www.temageo.com